

Graduate School Retreat 2022

Associate Dean & Program Reviews

Katie Ullman
Denise Haynie

Program Reviews

Status Report

New Features

Review Archive

Next Steps

Student Success

Brief Update

Program Reviews – Status report

9 reviews finalized and sent forward to Senate since July 1, 2021

4 reviews approved by Graduate Council so far during AY2021-22 --wrap-up meetings to come

3 more reviews to be presented to Graduate Council this semester

5 site visits* completed so far during AY2021-22 (*virtual and in-person)

7 more scheduled this semester

14 reviews scheduled for AY 2022-23 (kickoff meetings to be held this semester)

Program Reviews – New Features

1

Diversity of PhD pool
(context for faculty hires)



Filter

CIP Code Family (2 Digit)
HEALTH PROFESSIONS AN..

CIP Code Title (6 Digit)
Multiple values *

Year
All

OR Filter by Specific CIP Code
All

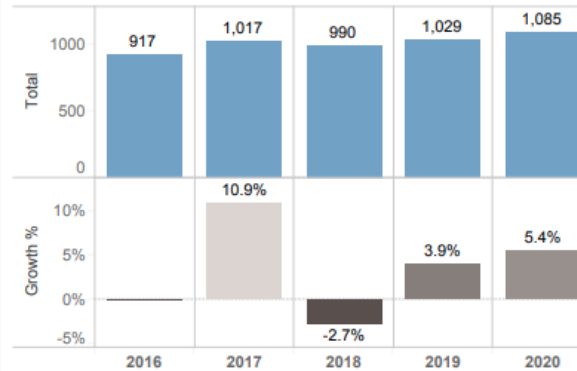
*Audiology/Audiologist
Communication
Disorders Sciences
Speech-Language
Pathology

Doctorates Awarded in the U.S.

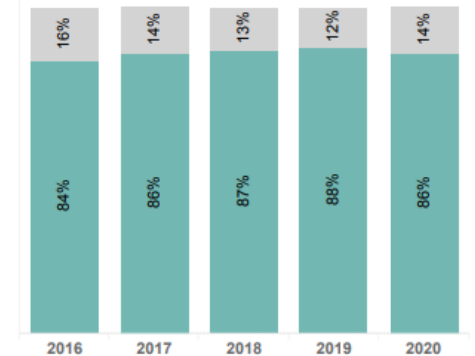
Between July 1, 2016 and June 30, 2020

Communication Sciences and Disorders

Number Awarded



% Women / Men



Ethnicity

(IPEDs definitions - one value per student. Hispanic categorized as such, all other categories are non-Hispanic)

	2016	2017	2018	2019	2020
American Indian/Alaska Native	3	3	2	3	2
American Indian/Alaska Native %	0.3%	0.3%	0.2%	0.3%	0.2%
Asian	35	39	38	49	52
Asian %	3.8%	3.8%	3.8%	4.8%	4.8%
Black	29	28	24	37	37
Black %	3.2%	2.8%	2.4%	3.6%	3.4%
Hawaiian/Pacific Islander	0	0	0	1	1
Hawaiian/Pacific Islander %	0.0%	0.0%	0.0%	0.1%	0.1%
Hispanic	63	58	69	62	62
Hispanic %	6.9%	5.7%	7.0%	6.0%	5.7%
White	644	769	726	745	792
White %	70.2%	75.6%	73.3%	72.4%	73.0%
Nonresident Alien	73	69	55	45	53
Nonresident Alien %	8.0%	6.8%	5.6%	4.4%	4.9%
Two Or More Races	18	9	22	18	16
Two Or More Races %	2.0%	0.9%	2.2%	1.7%	1.5%
Unknown	52	42	54	69	70
Unknown %	5.7%	4.1%	5.5%	6.7%	6.5%

Program Reviews – New Features

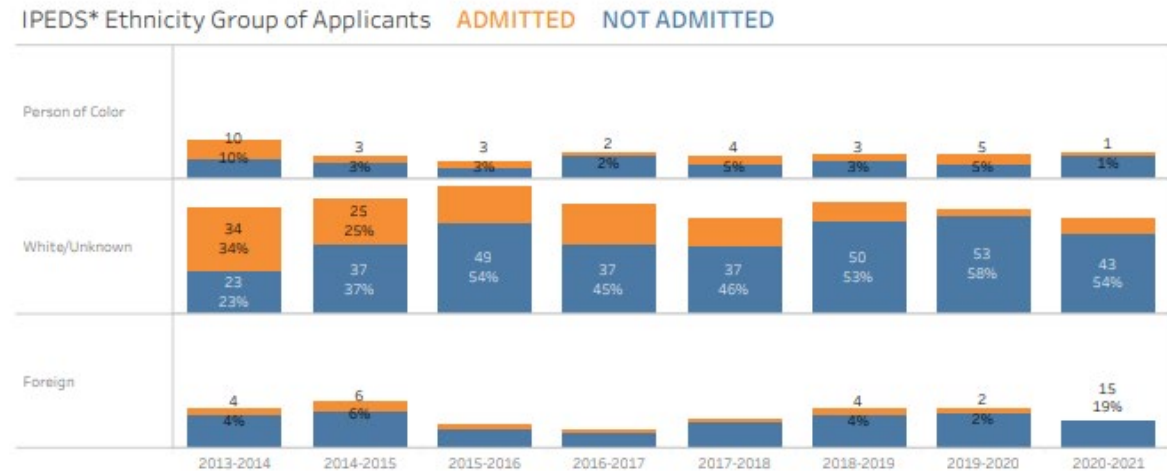
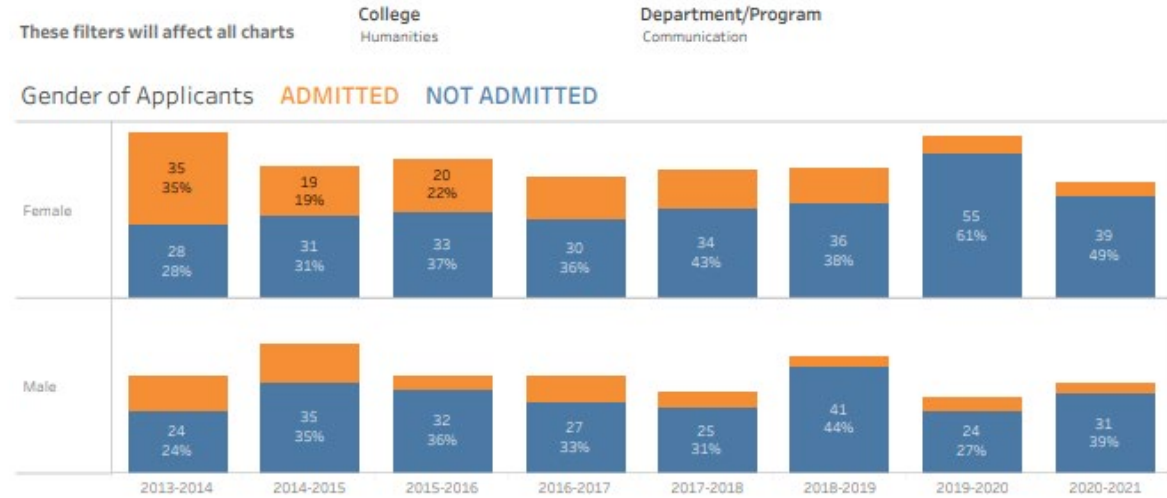
2

Admissions Demographics

The Graduate School Admissions Application Demographics



Application activity below is based on admissions applications in PeopleSoft. Based on the admissions procedure of each program, not all applications may be represented, especially for the School of Medicine, School of Dentistry, and the College of Law. This information should not be used for any purpose other than viewing demographics. Current academic year is displayed below but is still in progress.



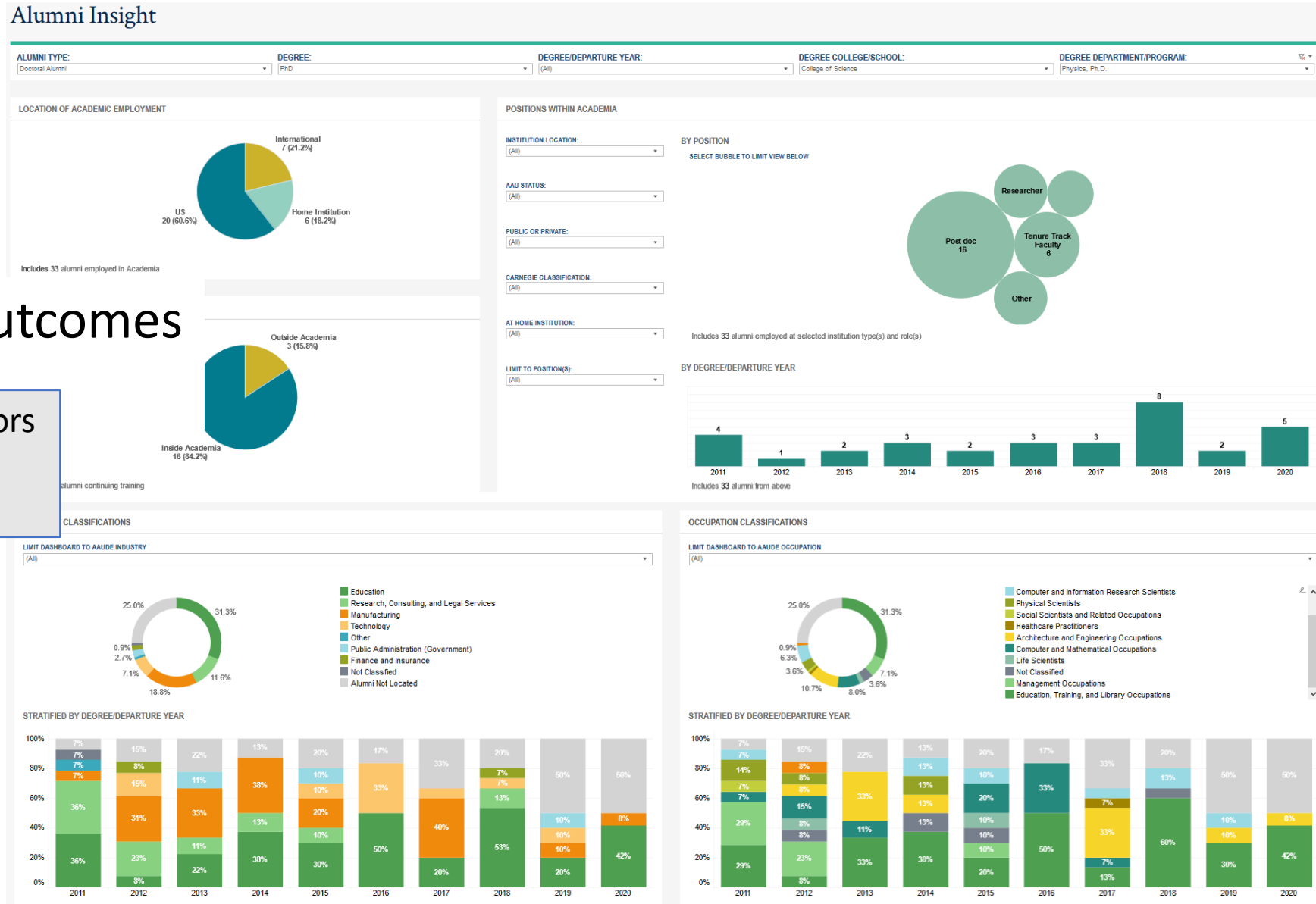
Program Reviews – New Features

3

Graduate Student Outcomes

Overview of positions, sectors

Spark interest in resource



Program Reviews – Archive Initiative

Streamline access to create greater continuity in departments and to enhance access to documentation for strategic planning

Worked with Mark Curtz from UIT to create system in OnBase
 Denise has uploaded 1700+ documents!
 Held an orientation for each college on campus (1 remaining)

COLLEGE	ACADEMIC DEPARTMENT/PR...	DOCUMENT TYPE	ACADEMIC YEAR	PROGRAM REVIEW RESPON...	RESPONSE TYPE	DOCUMENT D...
∨ Contains...	∨ Contains...	∨ Contains...	∨ Contains...	∨ Contains...	∨ Contains...	∨ On...
∨ College: Fine Arts (153)						
>	Academic Department/Program: Art and Art History (27)					
>	Academic Department/Program: Ballet (22)					
>	Academic Department/Program: Dance (9)					
∨ Academic Department/Program: Film and Media Arts (19)						
>	Academic Year: 2006 - 2007 (5)					
∨ Academic Year: 2013 - 2014 (14)						
Fine Arts	Film and Media Arts	PROGREV - Self Study	2013 - 2014			2/28/2014
Fine Arts	Film and Media Arts	PROGREV - Internal Review				11/24/2014
Fine Arts	Film and Media Arts	PROGREV - External Review				6/3/2015
Fine Arts	Film and Media Arts	PROGREV - Department Res				6/3/2015
Fine Arts	Film and Media Arts	PROGREV - Department Res				

2013 - 2014				2/28/2014
Fine Arts	Film and Media Arts	PROGREV - OBIA Profile	2013 - 2014	11/24/2014
Fine Arts	Film and Media Arts	PROGREV - Memo of Understanding	2013 - 2014	6/3/2015
Fine Arts	Film and Media Arts	PROGREV - Final Review Packet	2013 - 2014	6/3/2015

Items: 153

Document Edit Process Previous Document Next Document

1 of 3 Automatic Zoom

**Memorandum of Understanding
 Department of Film and Media Arts
 Graduate Council Review 2013-14**

This memorandum of understanding is a summary of decisions reached at a wrap-up meeting on April 9, 2015, and concludes the Graduate Council Review of the Department of Film and Media Arts. Ruth V. Watkins, Senior Vice President for Academic Affairs; Raymond Tymas-Jones, Dean of the College of Fine Arts; Kevin Hanson, Chair of the Department of Film & Media Arts; David B. Kieda, Dean of The Graduate School; and Donna M. White, Associate Dean of The Graduate School, were present.

Before getting to Future Goals, a BIG

Thank

You

to **Denise** for her many years of running program reviews with the highest professionalism and integrity!

Program Reviews – Future Goals

Complete Review Process Guidebook

Organize smooth transition

Collect feedback on Archive, new review guidelines

Student Success

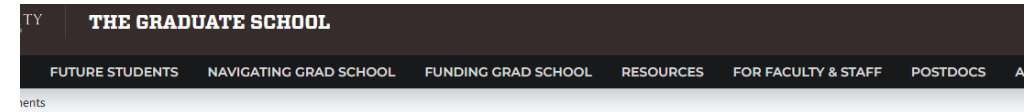
Grad School web-site

-- main site launched (thank you Holly and Jason!)
next steps: Thesis, Postdoc, Diversity...

--blog/announcements (thanks Sabrina!)

--Instagram, Twitter, Facebook
(thank you Sabrina and Holly!)

Parental leave (Sabrina, Dave, OEO)



Announcements

Graduate School Administered Opportunities

January 12, 2022



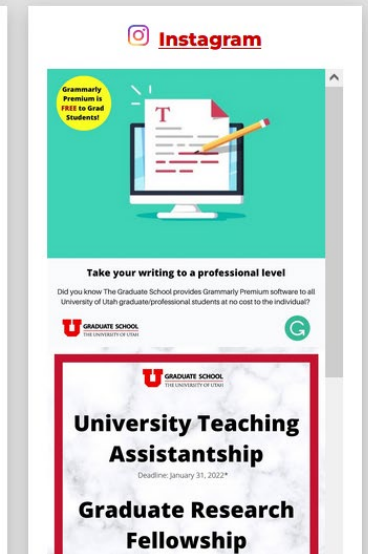
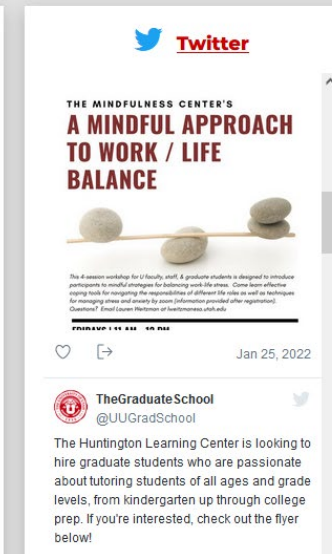
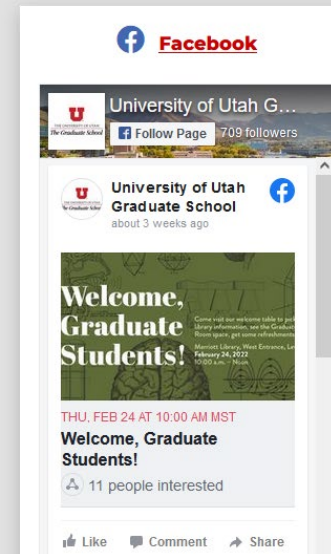
We are accepting applications for the University Teaching Assistantship and Graduate Research Fellowship! The deadline for these opportunities is January 31, 2022.

Share this article: [f](#) [t](#) [in](#) [+](#)

Categories

- Academic & Holiday
- Community Engagement
- Fellowships & Benefits
- Info Sessions
- Meet-up

Connect with Us



Student Success

Priorities for the year ahead:

Mobile U app [communication]
calendar

GRADitude Week

Enhance campus partnerships

COMING SOON! **Grad School Opt-in Channel**

Get the latest updates from the Grad School sent to your phone via MobileU

- event reminders
- upcoming deadlines
- new opportunities
- policy updates
- and more!

Check back here to find out when the opt-in channel launches!

While you wait, [download the MobileU app](#) to navigate student life, find your way around campus, stay up to date on news and events, and find information about helpful academic and technology resources.

